



School Newsletter

Thursday 4th June 2020

Welcome back to the second half of the summer term! I am sure you will agree that it seems quite unbelievable that we are in the final half term of the school year. I hope that you are all continuing to stay safe and well. The feedback we have been getting has really been encouraging—thank you all so much for your ongoing support during this difficult time.

Phased Wider Reopening

This week we have been open to more children, although still very few. Parents of children in Reception or Year 1 or who are key workers, can contact the school to arrange attendance; we ask that you let us know by Wednesday lunchtime of the week before so that we can ensure we are able to provide a place. At the moment, many staff are being asked to work from home only due to underlying health conditions and this limits the number of children we can supervise safely.

Learning at home

Teachers are emailing their classes with home learning weekly and we are updating the school website with the White Rose Maths sheets and STEM, art and music activities. Children should also be continuing to use DoodleMaths, DoodleSpell, DoodleEnglish and Times Table Rock Stars.

We are exploring two new online systems, which we hope to be able to update you on over the next couple of weeks. Please do email teachers if you have any queries or to share examples of completed work.

Facebook

Don't forget that we have a closed Facebook group, Charmouth Primary School—Closed Group. Please remember to answer all three questions when you request to join so that you are approved.



Class Zoom Meet Ups

The next class zoom sessions will be week beginning 15th June—look out for more information in the newsletter next week and emails with the joining instructions. We are exploring how we use it and hoping to create a more interactive session. If you or your child is not sure, please get in touch with us so we can explore options to encourage participation.

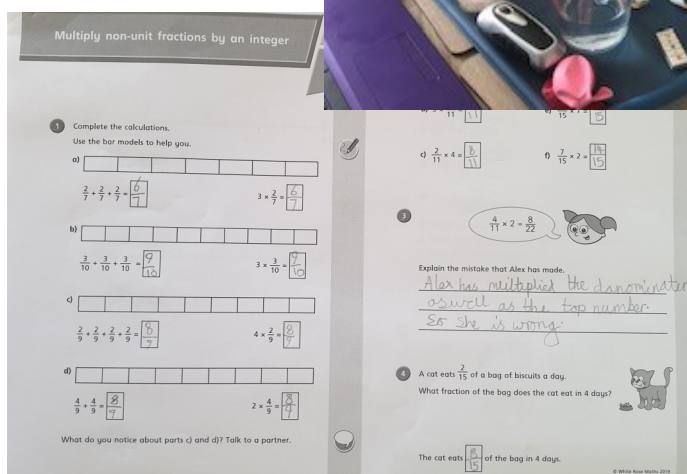
Parent Question

A parent has suggested a parent question section on the newsletter—if you have a question which you think would help others, please email and we will aim to answer questions or signpost you to resources or further information.

This week: **What is the point in the 24 hour clock?**

Answer: The 24 hour clock is useful to ensure clarity of times, avoiding confusing morning and afternoon times. It is also used more and more widely to give a time. Have a look at this short clip to show how it helps to work out lengths of time:
<https://www.youtube.com/watch?v=XAfP4sJa7Bg>

Thank you for continuing to share examples of your learning at home. We are enjoying seeing the outcomes of set work, the weekly challenges on our website and the additional activities you have been able to complete.



Charmouth Beavers Face Extinction

The Charmouth Scout Group are looking for a new Beaver Leader before the end of July or the Beaver Colony will not re-open in September. All you need is enthusiasm and an interest in teaching life skills to children aged 6-8. You would be supported by other assistant leaders and have access to a comprehensive package of training. If you would like to know more, contact Kevin on 07976 534517 or payne.kevin@gmail.com

